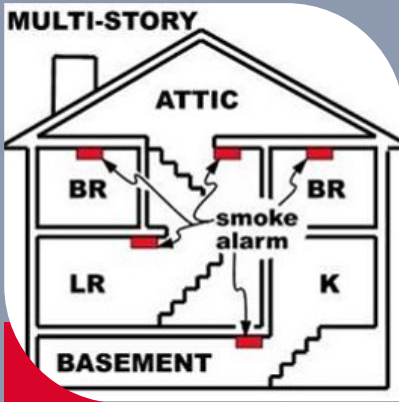


Right Alarm - Right Location

The right alarm in the right location may save your life.

Smoke Alarms



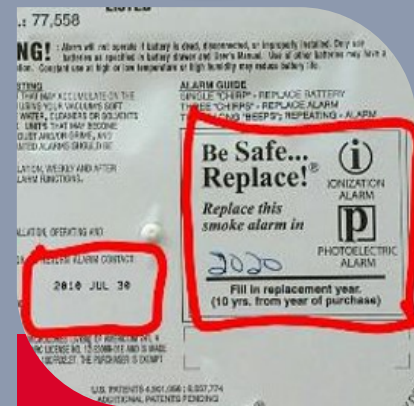
Location

Smoke alarms should be installed in **every** bedroom, **outside** each sleeping area, and on **every** level of your home. In the basement, install on the ceiling at the bottom of the stairs. On levels without bedrooms, install in the common room or near the stairway.



Placement

Smoke alarms can be installed on ceilings or walls. For **ceiling** installation, mount alarm toward the middle of the ceiling, no closer than 4 inches from walls. If ceiling installation is not possible, mount alarms on the **wall**, no closer than four inches from the ceiling.



Expiration

Residential smoke alarms are rated for **10 years**. The date of manufacture is on the back of your smoke alarm.

If the date is **missing** or **unreadable**, replace the alarm.



Test

Test smoke alarms at least once a month.

Replace batteries at least every year (unless the alarm has a 10-year sealed battery).



Install

Install only UL-listed alarms bought from local or online retailers.

Check with your local fire department or American Red Cross to see if they have free alarms available.

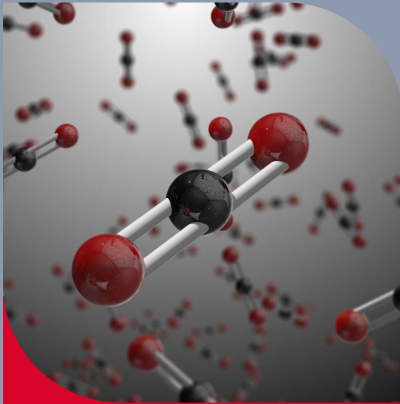


Avoid

To avoid nuisance alarms, keep smoke alarms at least 10 feet away from cooking appliances, as well as 3 feet away from bathrooms and laundry rooms.

TIP: When replacing alarms, purchase ones with a 10-year sealed battery.

Carbon Monoxide Alarms



Education

Carbon monoxide (CO) is a colorless, odorless, poisonous gas.

The only safe way to detect CO in your home is with a CO alarm.



Sources

Every home with a fuel-burning appliance, attached garage, or fireplace should have a CO alarm.



Location

Install one CO alarm per level in the hallway near each bedroom or sleeping area.

Alarms should be placed at least five feet away from a CO source.

Deaf/Hard of Hearing Alarms



Hearing Loss

Many suffer from some degree of hearing loss. When a home fire emergency occurs, those individuals are at greater risk.



Technology

Deaf/Hard of Hearing Smoke Alarms, commonly known as "bed-shakers," work with smoke alarms in the home to notify individuals of a possible life-threatening fire emergency.



Resource

South Carolina deaf/hard of hearing residents may qualify for free resources.

[Click here to learn more.](#)

For more information on alarms, visit:
firesafe.sc.gov

